

A TRIP TO EUROPE AND ENGLAND IN 1848

IMAGE 478

Bertel Thorvaldsen, whose sculptures in Vor Frue Kirke (The Church of Our Lady) in Copenhagen Anna Whistler, James, and Willie viewed in July 1848



Horace Vernet. *Bertel Thorvaldsen (1768–1844) with the Bust of Horace Vernet*. 1838. Oil on canvas. 38 x 29½ in. (96.5 x 74.9 cm). Metropolitan Museum of Art, New York (62.254).

IMAGE 479

Thorvaldsen's Museum in Copenhagen, where Anna Whistler and Willie visited his mausoleum in September 1848.

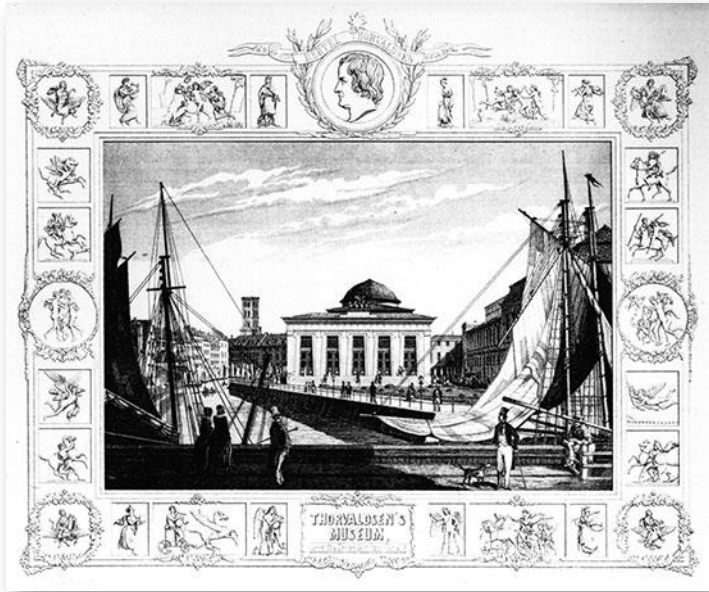


Image courtesy of Thorvaldsen's Museum, Copenhagen, Denmark.

IMAGE 480

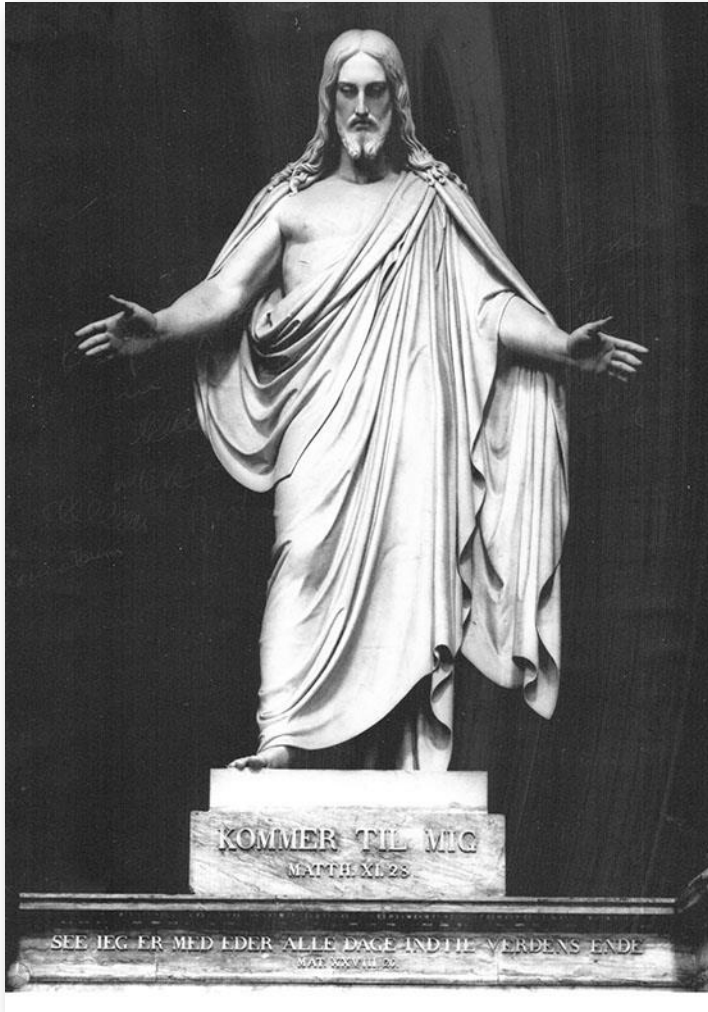
Front view of Vor Frue Kirke (The Church of Our Lady), Copenhagen



Vor Frue Kirke (Church of Our Lady), Copenhagen, Denmark. Photograph courtesy of Vor Frue Kirke Archives, Copenhagen, Denmark.

IMAGE 481

Bertel Thorvaldsen's sculpture *Christ*, in Vor Frue Kirke (The Church of Our Lady), made a deep impression on Anna Whistler, who viewed it in July 1848.



Bertel Thorvaldsen. *Christ*. c. 1830. Marble. Vor Frue Kirke (Church of Our Lady), Copenhagen, Denmark. Photograph courtesy of Vor Frue Kirke Archives.

IMAGE 482

Anna Whistler viewed the Angel font resting on a carpet when she visited Vor Frue Kirke (The Church of Our Lady) in July 1848.



Bertel Thorvaldsen. *Angel Font* resting on carpet. Vor Frue Kirke (Church of Our Lady), Copenhagen, Denmark. Photograph courtesy of Vor Frue Kirke Archives.

IMAGE 483

Anna Whistler viewed the sculptures of the Twelve Apostles when she visited Vor Frue Kirke (The Church of Our Lady) in July 1848.



Bertel Thorvaldsen. *St. Paul*. c.1830. Vor Frue Kirke (Church of Our Lady), Copenhagen, Denmark. Photograph courtesy of Vor Frue Kirke Archives.

IMAGE 484

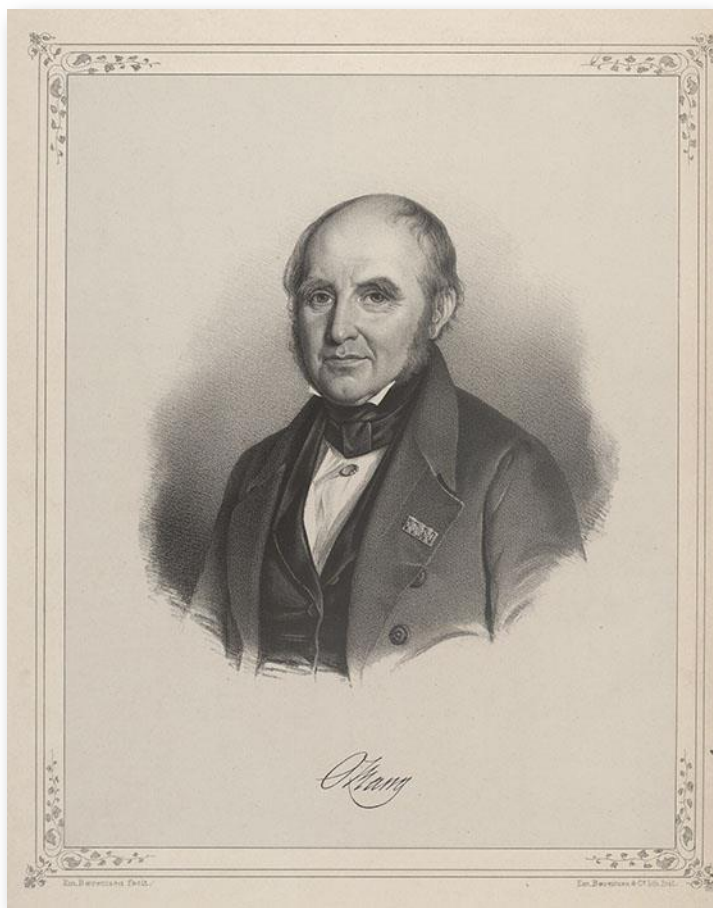
Anna Whistler viewed the terra cotta pediment of Vor Frue Kirke (The Church of Our Lady), depicting St. John the Baptist preaching in the wilderness, when she visited the church in July 1848.



Bertel Thorvaldsen. *St. John Preaching in the Wilderness*. Terra cotta. On the pediment of Vor Frue Kirke (Church of Our Lady), Copenhagen, Denmark. Photograph courtesy of Vor Frue Kirke Archives.

IMAGE 485

Oluf Lundt Bang was the Danish obstetrician attending Grand Duchess Aleksandra Nikolaevna in 1844, whom Anna Whistler met on the *Camilla* in July 1848.



Oluf Lundt Bang. Lithograph. 23.1 x 30.3 cm. Royal Danish Library, Copenhagen (KBP7).

IMAGE 486

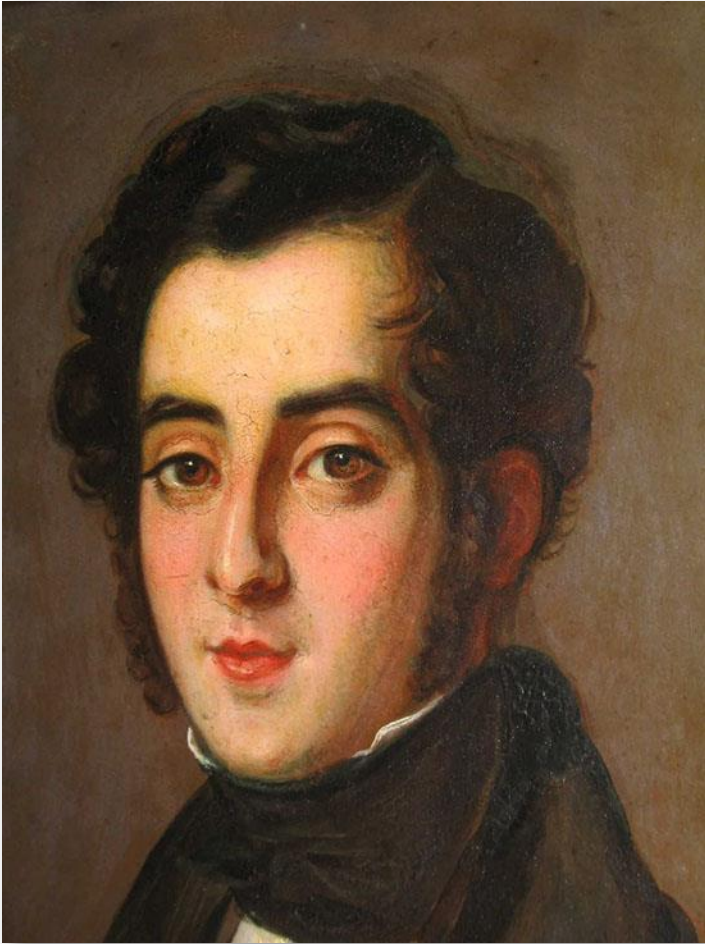
Anna Whistler revisited in 1848 Georgina (Wardrop) Shaw, whom she had met in 1830 through the Stevenson family.



Georgina (Wardrop) Shaw, c. 1814. Image courtesy of John Hersey, descendant of the Shaw family.

IMAGE 487

Anna Whistler first met Georgina Shaw in 1830, seven years after the death of the latter's husband, John Shaw.



John Shaw, physician, husband of Georgina (Wardrop) Shaw, c. 1814. Image courtesy of John Hersey, descendent of the Shaw family.

IMAGE 488

When Anna Whistler visited Georgina (Wardrop) Shaw in 1848, she was not allowed to see her frail mother, Catherine (Fraser) Wardrop, whom Anna Whistler called Mrs. Wardrobe.



William Dickes. *Grandmamma* [Catherine (Fraser) Wardrop]. c. 1840s. Image courtesy of John Hersey, descendent of the Shaw family.

IMAGE 489

Anna Whistler, James, and Willie visited Pastor Richard Henry Smith and his family at Brading Church.



H.W. Bartlett and T. Barker. *Brading, Looking Toward St. Helen's*. 1834. Steel engraving. (*Barber's Picturesque Guide* 1834, facing p. 28)

IMAGE 490

Shanklin Chine on the Isle of Wight, with its steps to the sea.



H. Bartlett and H. Winkles. *Shanklin Chine*. 1834. Steel engraving. (*Barber's Picturesque Guide* 1834, facing p. 67)

IMAGE 491

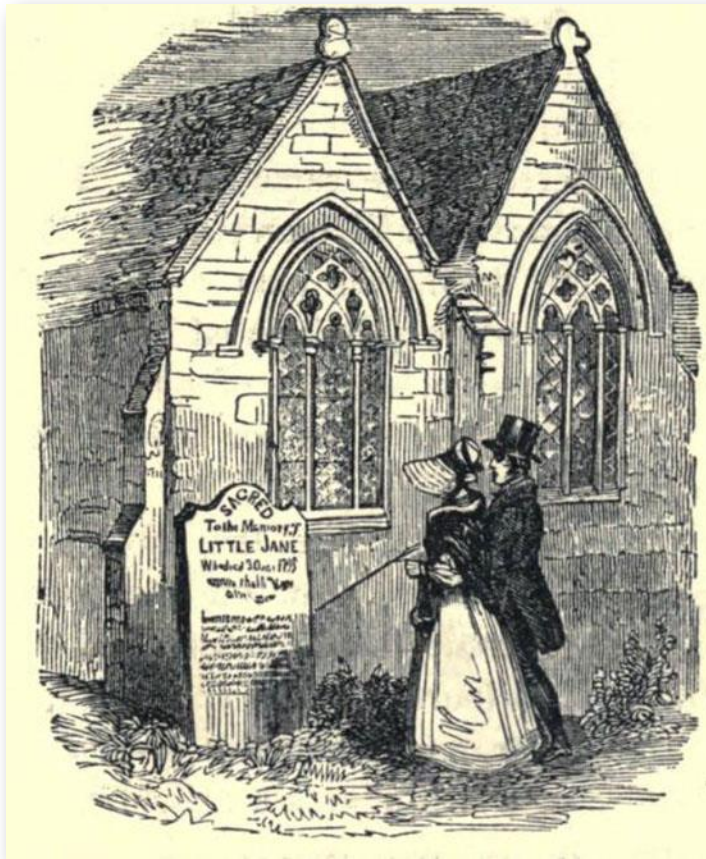
The parsonage at Shanklin, famed for its myrtles



Frederick Hudson (d. 1889). *The Parsonage, Shanklin, I.W.* Photograph. c. 1870. Courtesy of the J. Paul Getty Museum, Los Angeles, CA, USA (84.XD.1157.1157).

IMAGE 492

Little Jane's Grave, which Anna Whistler, James, and Willie visited



Grave of Little Jane. Sketch. c. 1850 (Richmond, *Annals of the Poor* [Philadelphia, PA: Presbyterian Board of Publication, n.d.], p. 193)

IMAGE 493

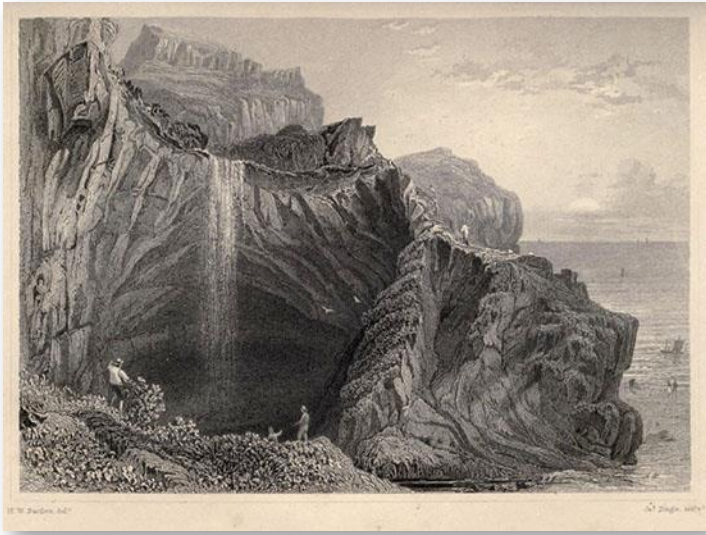
Anna Whistler, James, and Willie walked from Shanklin through Appuldurcumb Park, Lord Yarborough's estate, on their way to Cook's Castle..



T. Barber. *Appuldurcumb Park Lord Yarborough's*. 1834. Steel engraving. (*Barber's Picturesque Guide* 1834, facing p. 56)

IMAGE 494

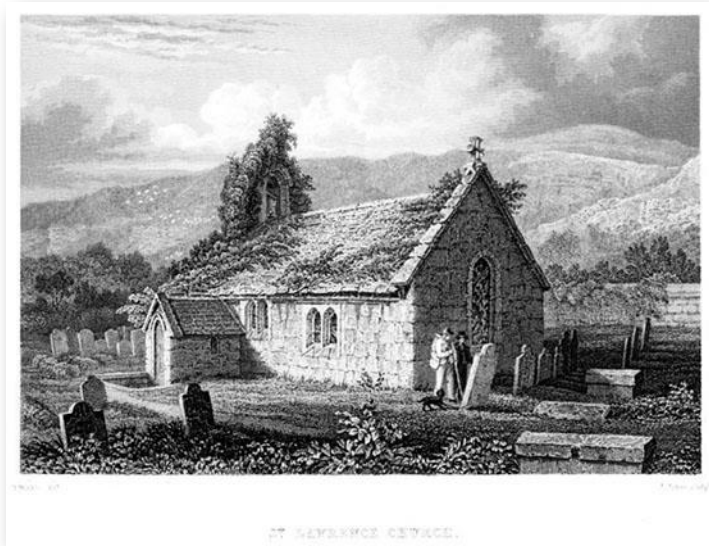
Blackgang Chine, where James attempted to draw the waterfall and cavern up the side of the precipice



H.W. Bartlett and J. Tingle. *Black-Gang Chine*. 1850. Steel engraving. (*Barber's Picturesque Guide* 1850, facing p. 83)

IMAGE 495

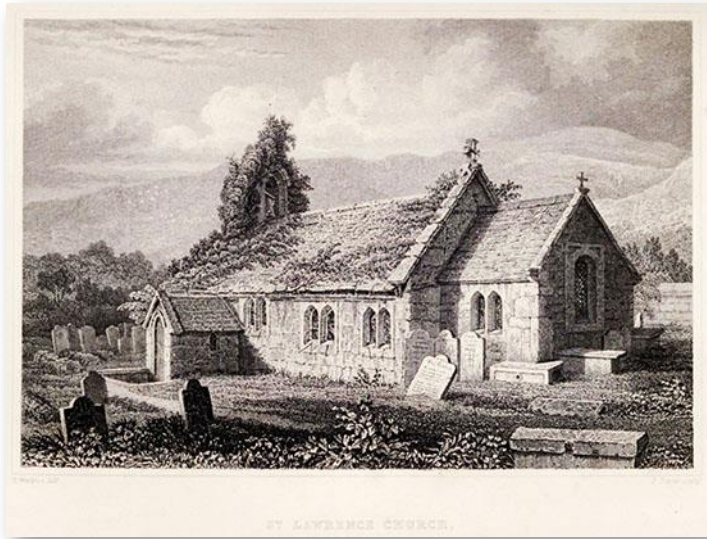
St. Lawrence Church in 1834 before an extension in 1842 made it no longer the smallest church on the Isle of Wight.



H. Winkles and J. James. *St. Lawrence Church*. 1834. Steel engraving. (*Barber's Picturesque Guide* 1834, facing p. 79)

IMAGE 496

St. Lawrence Church, with its extension, which Anna Whistler saw in 1848.



H. Winkles and J. James. *St. Lawrence Church*. 1850. Steel engraving. (*Barber's Picturesque Guide* 1850, facing p. 79)