

## FRIENDS AND ACQUAINTANCES IN ST. PETERSBURG

### IMAGE 253

Reverend Edward Law was chaplain of the English Church in St. Petersburg from 1820 to 1864. He became Reverend Doctor Law in June 1844.



Timoleon Neff (1805–1876) (attributed). *Portrait of Rev. Edward Law (1791–1868)*. Leeds Russian Archive, University of Leeds, UK (LRA/MS 1117).

## IMAGE 254

Mary Eliza (Law) Cattley, daughter of Rev. Edward Law



*Mary (Law) Cattley*. Photograph of a portrait. Leeds Russian Archive, University of Leeds, UK (LRA/MS 1406).

## IMAGE 255

James Richard Cattley, who married Mary Eliza Law in October 1840



*James Richard Cattley*. Photograph of a portrait. Leeds Russian Archive, University of Leeds, UK (LRA/MS 1406).

## IMAGE 256

Reverend Thomas Scales Ellerby, pastor of the British and American Congregational Church in St. Petersburg from 1840 to 1853



*Rev. T.S. Ellerby* (Romanes, *Calls of Norfolk and Suffolk*, following p. 82)

## IMAGE 257

Sarah Bealey Schofield, niece of Rev. T.S. Ellerby's wife, who, before her marriage to Charles Bell, was nursemaid to the Ellerby children



*Sarah Bell* (Romanes, *Calls of Norfolk and Suffolk*, following p. 86)

## IMAGE 258

William Maingay, British merchant in St. Petersburg from the 1830s until May 1844, husband of Eliza (Lamb) Maingay



*William Maingay.* Maingay Family Archive.

## IMAGE 259

Eliza (Lamb) Maingay and Anna Whistler became friends in St. Petersburg in 1844.



*Eliza (Lamb) Maingay*. 1840s. Maingay Family Archive.

## IMAGE 260

William Bonamy Maingay, eldest son of William and Eliza (Lamb) Maingay, was romantically interested in Deborah Whistler for a time.



*William Bonamy Maingay*. c. 1859. Photograph. Maingay Family Archive.



## IMAGE 261

Charles George Maingay, second son of William and Eliza (Lamb) Maingay, died in St. Petersburg in 1843, from a fall on the ice, at the age of 13.



*Charles George Maingay.* Maingay Family Archive.

## IMAGE 262

Eliza Anne Maingay (“Nina”), eldest daughter of William and Eliza (Lamb) Maingay, whose piety Anna Whistler deeply admired



*Eliza Anne Maingay*. Photograph. Maingay Family Archive.

## IMAGE 263

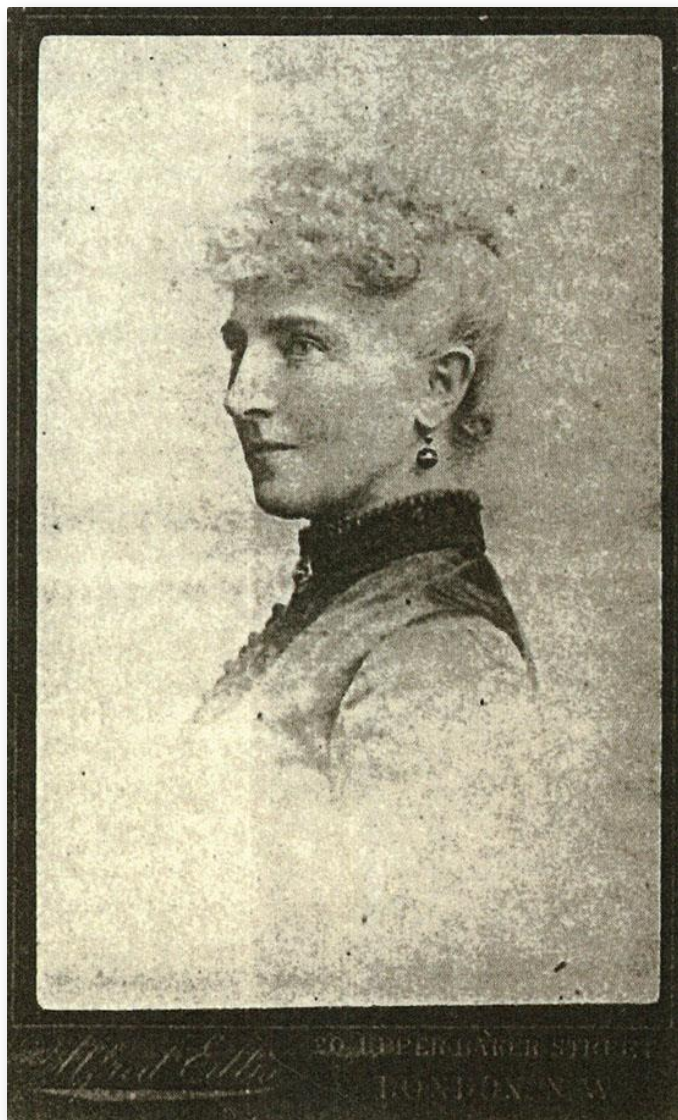
Emma Elizabeth Maingay, second daughter of William and Eliza (Lamb) Maingay, was the lifelong friend of Deborah Delano (Whistler) Haden, whom she met in St. Petersburg.



*Emma Elizabeth Maingay*. September 1859. Photograph. Maingay Family Archive.

## IMAGE 264

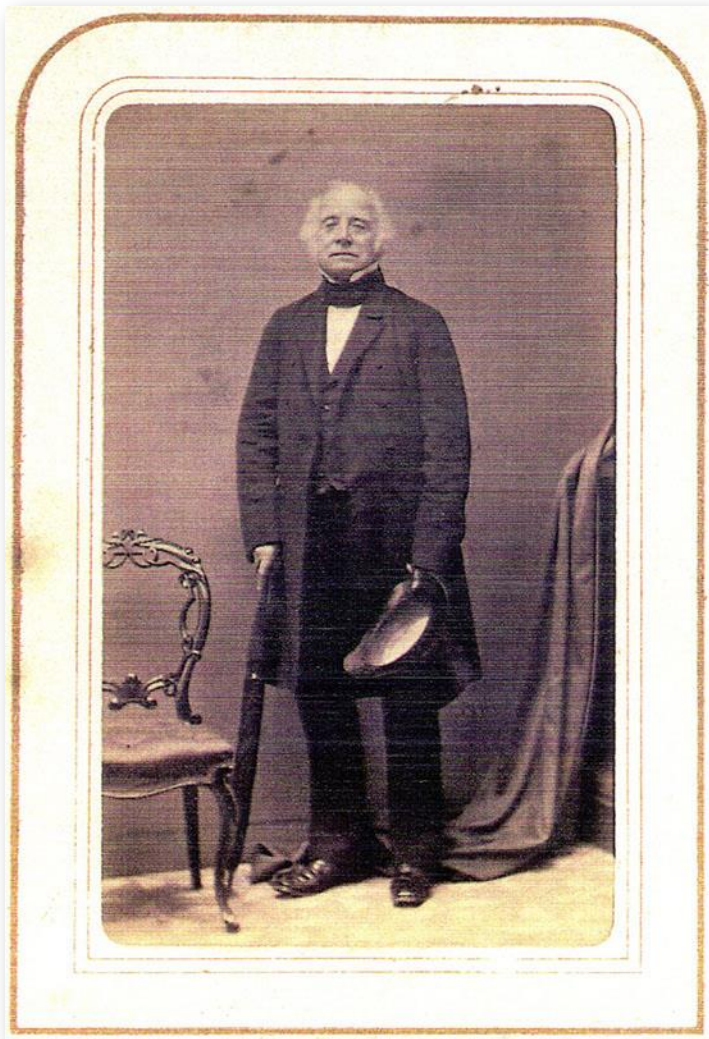
Emily Maingay (“Lille” or “Lily”), youngest daughter of William and Eliza (Lamb) Maingay



*Emily Maingay*. Photograph. Maingay Family Archive.

## IMAGE 265

William Clarke Gellibrand, an English merchant, became a close friend of the Whistlers in St. Petersburg.



*William Clarke Gellibrand.* Photograph taken in Norwich, England, provided by Jane D'Arcy, a descendent of William Clarke Gellibrand's brother, Joseph Tice Gellibrand

## IMAGE 266

Mary Tyler (Ropes) Gellibrand, the American wife of William Clarke Gellibrand, became a close friend of Anna Whistler's.



*Mary Tyler Gellibrand.* Photograph taken in Norwich, England, provided by Jane D'Arcy, a descendent of William Clarke Gellibrand's brother, Joseph Tice Gellibrand

## IMAGE 267

Mary Tyler (Ropes) Gellibrand and her biological sister, Elizabeth Hannah Ropes, whom she and her husband, William Clarke Gellibrand, adopted, frequently visited her brother, William Hooper Ropes, who lived across the hall from the Whistlers.



Jean Daniel Huber (1754–1845). *Mary Tyler (Ropes) Gellibrand and her sister Elizabeth Hannah Ropes*. Photograph of an 1840 portrait painted in the Tyrol. Leeds Russian Archive, University of Leeds, UK (IRA/MS 1406).

## IMAGE 268

The Whistler family frequently visited with Archibald Mirrielees, Scottish merchant, a friend of the Ropeses and Gellibrands.



Archibald Mirrielees with his children Maggie and Fred. Photograph from daguerrotype of 1857. (Pitcher, *Muir and Mirrielees*, p. 42).



## IMAGE 269

The Whistler family frequently visited with Jane (Muir) Mirrielees in St. Petersburg, after she became the third wife of Archibald Mirrielees in 1844.



Jane (Muir) Mirrielees, third wife of Archibald Mirrielees, with three of their children: Maida, Archy, and Augusta. Photograph from daguerrotype of 1857. (Pitcher, *Muir and Mirrielees*, p. 42)

## IMAGE 270

Benjamin Ropes Prince, brother of George Henry Prince and first cousin of William Hooper Ropes



*Benjamin Ropes Prince*. 1863. Photograph taken at Whitney's Gallery, St. Paul, MN.  
Courtesy of S. Hardy Prince, of Beverley, MA.

IMAGE 271

Charles Wood was in the cotton-spinning business in St. Petersburg.



*Charles Wood.* Photograph. Courtesy of Rev. Eric Wood of Bruton, Somerset, England.

## IMAGE 272

Lydia (Procter) Wood, wife of Charles Wood and a close friend of Anna Whistler's in St. Petersburg



*Lydia (Procter) Wood*. Photograph. Courtesy of Rev. Eric Wood of Bruton, Somerset, England.

## IMAGE 273

Harriet (Henley) Whishaw, a close friend of Deborah Whistler's, whose wedding the latter could not attend in 1846 because she was in England



*Harriet Whishaw, née Henley* (Whishaw, *History*, between pp. 164–165)

## IMAGE 274

Charles Baird, owner of the Baird Iron Works, that made metal furnishings for many of the buildings of St. Petersburg, died in late 1843. “Old Mrs. Baird” was his widow.



W. Hall. *Charles Baird*. 1867. Engraving. (T. Tower, *Memoir of the Late Charles Baird, Esq., of St. Petersburg, and of His Son, the Late Francis Baird, Esq., of St. Petersburg, and 4, Queen's Gate, London* [London: Harrison and Sons, 1867], frontispiece)

## IMAGE 275

Francis Baird, son of Charles Baird, who succeeded his father as head of the Baird Iron Works



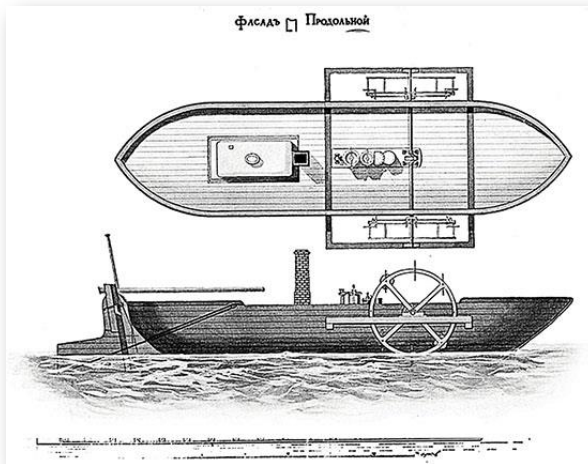
W. Hall. *Portrait of Francis Baird, son of Charles Baird*. 1867. Engraving. (Tower, *Memoir of Charles Baird*, frontispiece)

## IMAGES 276, 277

The *Elizaveta*, the first Russian steamship, produced at the Baird Iron Works in 1815



*Elizaveta*. c. 1820. Colored lithograph. (*The First Steamboat on the Neva*, 15 November 2015, [http://bianki.mypage.ru/nauka-i-tehnika/perviy\\_parohod\\_na\\_neve\\_1\\_1.html](http://bianki.mypage.ru/nauka-i-tehnika/perviy_parohod_na_neve_1_1.html))



[*Elizaveta*] Longitudinal Façade. (Tower, *Memoir of Charles Baird*, unnumbered plate)