

THE ALEXANDROFSKY HEAD MECHANICAL WORKS AND MAJOR WHISTLER'S WORK ASSOCIATES

IMAGE 223

Alexandrofsky Head Mechanical Works in about 1840



Alexandrofsky, c. 1840. Photograph. Courtesy of Estelle and David Knapp.

IMAGE 224

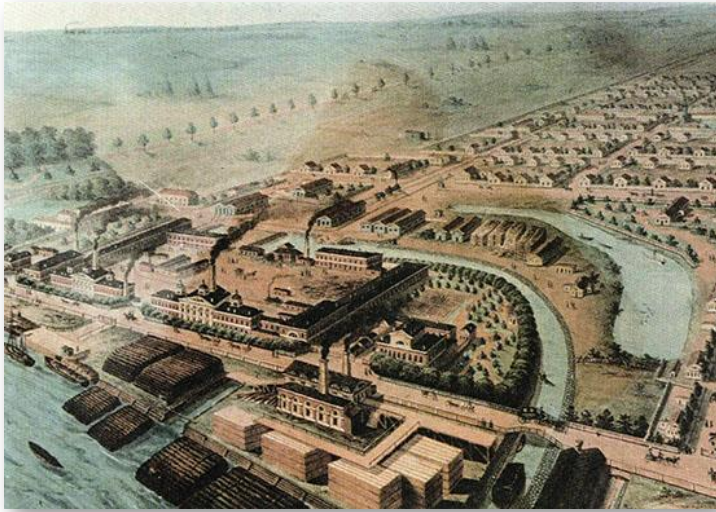
This bird's-eye view of the Alexandrofsky Head Mechanical Works was drawn for Andrew McCalla Eastwick by a draftsman in 1844. It is here that the locomotives and rolling stock for the St. Petersburg–Moscow Railway were being made by the firm of Harrison, Winans and Eastwick, and the three partners and their families lived.



Bird's-eye Drawing of the Alexandrofsky Head Mechanical Works. Watercolor. 60 x 90 cm.
Courtesy of Estelle and David Knapp.

IMAGE 225

Alexandrofsky Head Mechanical Works in about 1845



Alexandrofsky Head Mechanical Works. c. 1845. Reproduction of a drawing. Courtesy of Estelle and David Knapp.

IMAGE 226

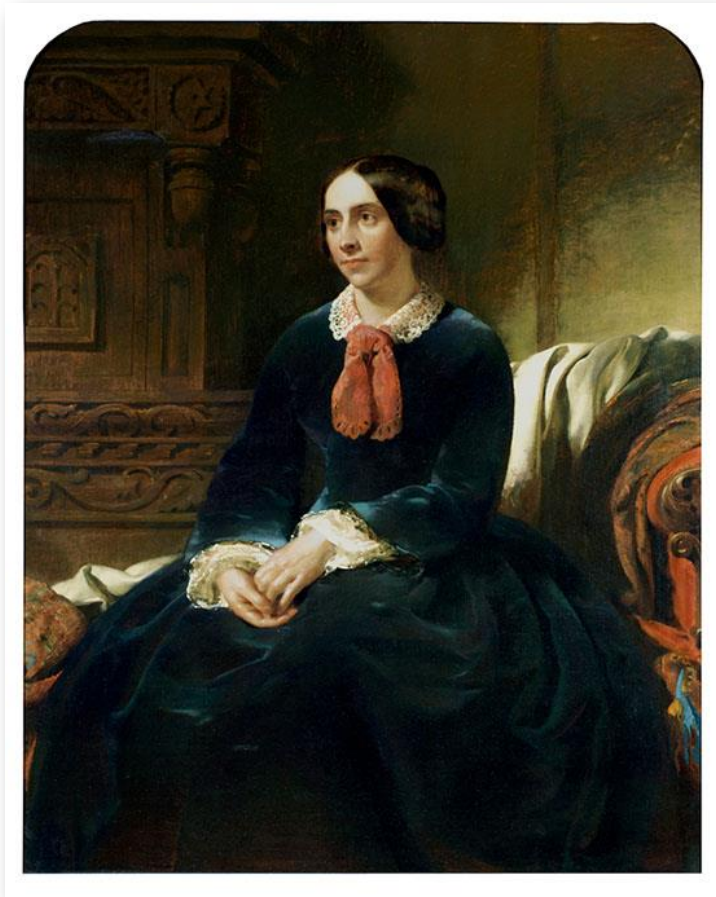
Joseph Harrison Jr., partner in the firm of Harrison, Winans and Eastwick, who were building the locomotives and rolling stock for the St. Petersburg–Moscow Railway at the Alexandrofsky Head Mechanical Works



Thomas Buchanan Read (1822–1872). *Joseph Harrison, Jr.* 1860. Oil. 51 x 41¼ in. Pennsylvania Academy of the Fine Arts, Philadelphia, PA; gift of Leland Harrison.

IMAGE 227

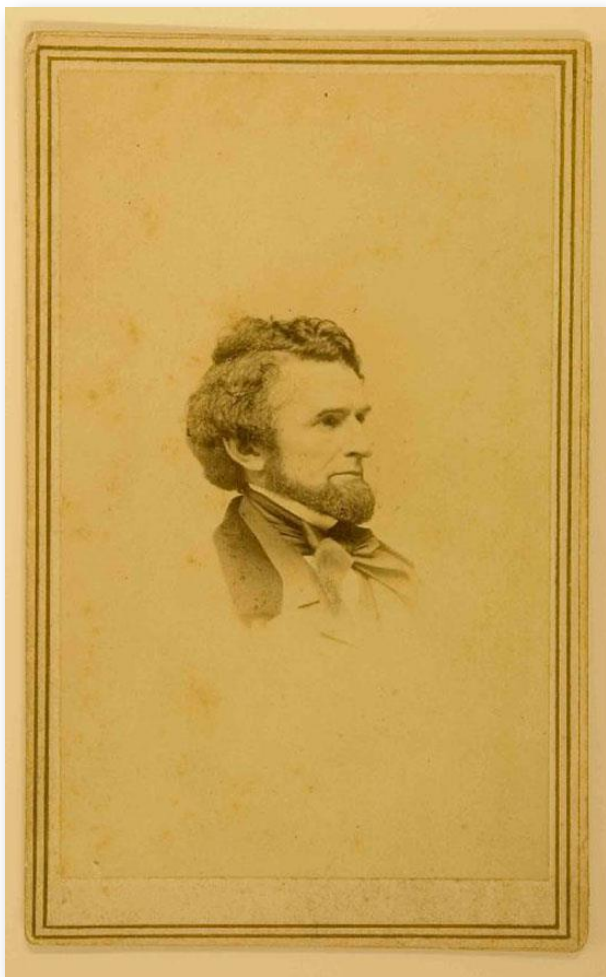
Sarah (Poulterer) Harrison, wife of Joseph Harrison Jr.



Sarah Poulterer Harrison. c. 1850. Oil. $50\frac{1}{8} \times 40\frac{1}{8}$ in. Pennsylvania Academy of the Fine Arts, Philadelphia, PA; gift of Leland Harrison. Formerly attributed to Thomas Buchanan Read (1822–1872).

IMAGE 228

Ross Winans Sr., whom his son Thomas DeKay represented as a partner in the firm of Harrison, Winans and Eastwick



A.A. Turner (c. 1831–1866). Photograph ... of *Ross Winans, Sr.* Photograph mounted on card. 9.2 x 5.6 cm; mount: 10.4 x 6.5 cm. Imprint on mount: D. Appleton & Co., 443 & 445 Broadway, N.Y. A.A. Turner, photographer. GUL: Whistler Collection, PH1/155.

IMAGE 229

Thomas DeKay Winans, partner in the firm of Harrison, Winans and Eastwick



Thomas DeKay Winans. Photograph. Courtesy of Estelle and David Knapp.

IMAGE 230

Celeste Louise Revillon, wife of Thomas DeKay Winans



Bencann. *Celeste (Revillon) Winans*. c. 1860. Carte de visite. (MdHS; photograph courtesy of Estelle and David Knapp)

IMAGE 231

Celeste Louise Revillon, at the time of her marriage to Thomas DeKay Winans



Alfred Jacob Miller. *Mrs. Thomas Winans (Celeste Revillon)*. 1847. Oil. Frick Art Reference Library, accessed 31 March 2022, <https://digitalcollections.frick.org/digico/#/details/bibRecordNumber/b13309900/Photoarchive>

IMAGE 232

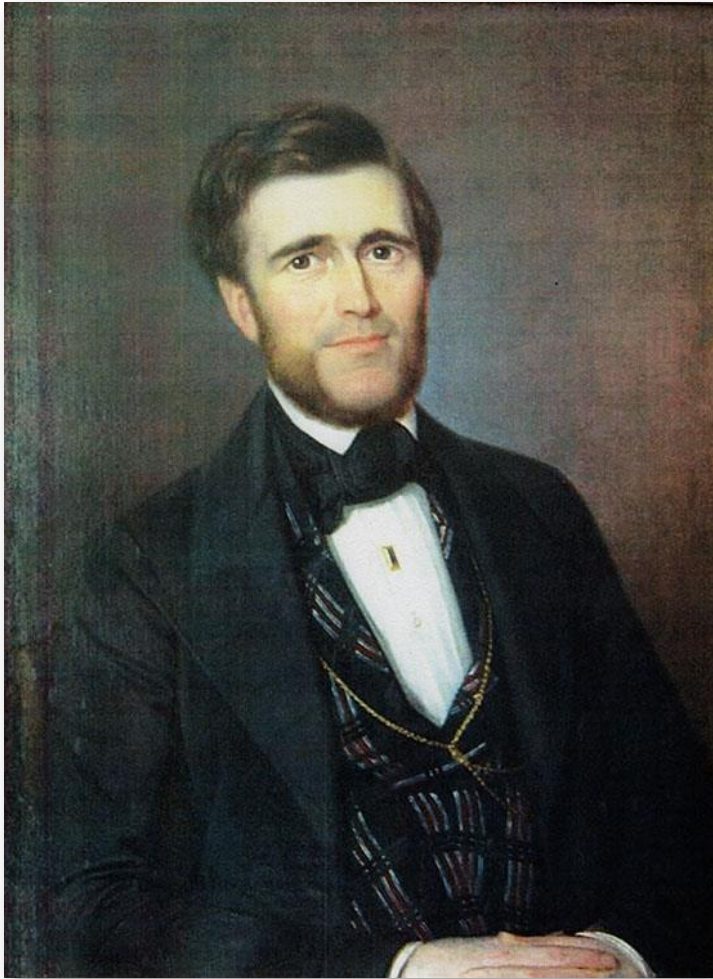
William Louis Winans, brother of Thomas DeKay Winans, in Russia



William Louis Winans in a Troika Outside his St. Petersburg Home. Lot 232: The Agra Diamond, Christie's auction house catalogue, 20 June 1990, p. 20. Courtesy of David Knapp.

IMAGE 233

Andrew McCalla Eastwick of the firm of Harrison, Winans and Eastwick



Portrait of Andrew McCalla Eastwick. 1846. Oil on canvas. 66 x 84 cm. Probably painted in Philadelphia, PA, by Robert Street of Germantown. Courtesy of Estelle and David Knapp.

IMAGE 234

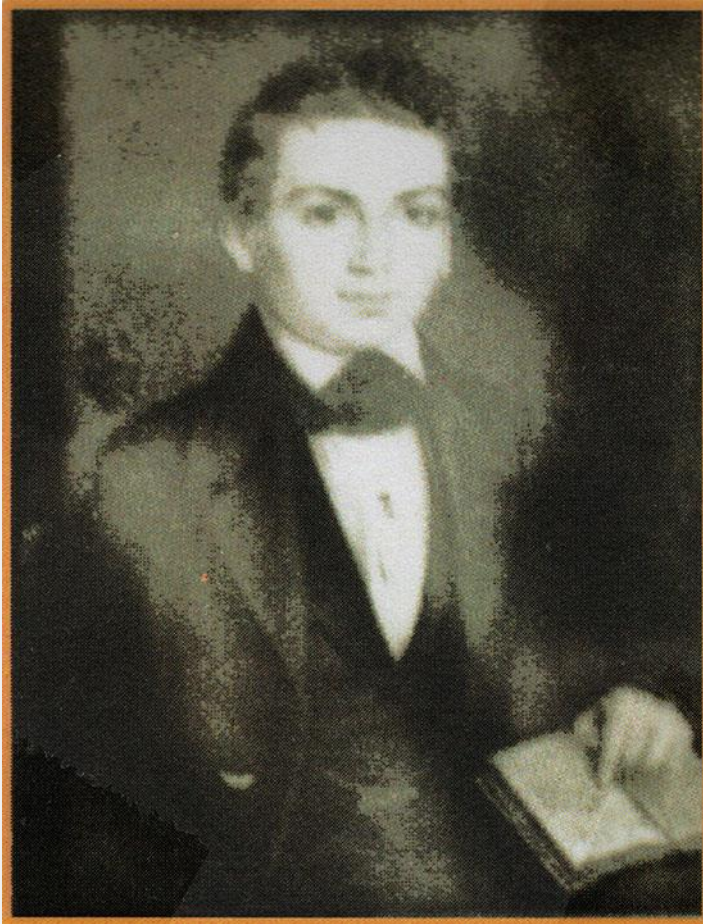
Lydia Ann (James) Eastwick, wife of Andrew McCalla Eastwick



Portrait of Lydia Ann (James) Eastwick. 1846. Oil on canvas. 66 x 84 cm. In the private collection of Maria Edna Eastwick, Greenwich, CT; photograph courtesy of Estelle and David Knapp.

IMAGE 235

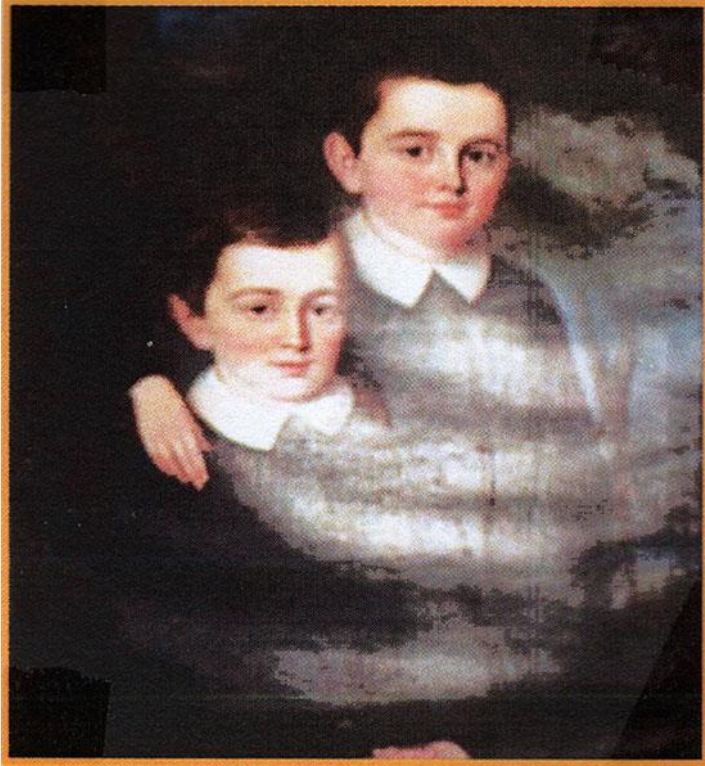
Edward Peers Eastwick, eldest son of Andrew McCalla and Lydia Ann (James) Eastwick, came to Russia with his father before the other family members.



Portrait of Edward Peers Eastwick. Courtesy of Estelle and David Knapp.

IMAGE 236

Phillip and Charles Eastwick, sons of Andrew McCalla and Lydia Ann (James) Eastwick, were playmates of James and Willie Whistler.



Portrait of Phillip and Charles Eastwick. Courtesy of Estelle and David Knapp.

IMAGE 237

Maria and Margaret Eastwick, the two elder daughters of Andrew McCalla and Lydia Ann (James) Eastwick



Portrait of Maria and Margaret Eastwick. c. 1846. Miniature. In the private collection of Marjorie S. Eastwick, Lively, VA; photograph courtesy of Estelle and David Knapp.

IMAGE 238

Lydia Eastwick with her two sons – William on the left and George on the right – in St. Petersburg in about 1849



Lydia Ann Eastwick and Sons in Russia. c. 1849. Oil on canvas. Courtesy of Estelle and David Knapp.

IMAGE 239

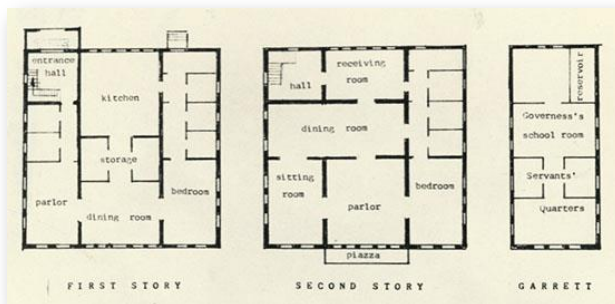
The house in which the Eastwicks and Harrison lived at the Alexandrofsky Head Mechanical Works



Eastwick and Harrison home at Alexandrofsky Head Mechanical Works. Photograph. Courtesy of Estelle and David Knapp.

IMAGE 240

Floor plan of Eastwick and Harrison home: the Eastwicks lived on the first floor; the Harrison on the second floor; and the schoolroom, where Rev. Thomas S. Ellerby preached on Sundays, was in the garrett.



Floor Plan of Eastwick and Harrison Home at Alexandrofsky Head Mechanical Works. Courtesy of Estelle and David Knapp.

IMAGE 241

Engineer-General Alexander Wilson was in charge of the orphanage in which linens and playing cards were made.



Engineer-General Alexander Wilson (Bowles, “From the Banks of the Neva,” p. 68)

IMAGE 242

Playing cards and linens of superb quality were made at the Aleksandrovskaia Manufactory (also called General Wilson’s), located on the Schlüsselberg Road, which Aunt Alicia visited in the summer of 1844.



The Imperial Aleksandrovskaia Manufactory. (Shūglits, *Promyshlennaia arkhitektura Peterburga*, facing p. 64)

IMAGE 243

Count Pyotr Andreevich Kleinmikhel' was head of the Main Administration of Transport and Public Buildings, and Major Whistler's superior.



Franz Krüger (1797–1857). *Portrait of Count Peter von Kleinmichel (1793-1869)*. 1851. Oil on canvas. 53.9 x 40.9 in. (137 x 104 cm). Inscribed below right: “Krüger px. 1851.” State Hermitage Museum, St. Petersburg (ERZh-211).

IMAGE 244

Count Aleksei Andreevich Arakcheev, mentor to young Pyotr Andreevich Kleinmikhel', in whom he instilled his Draconian philosophy



George Dawe (1781–1829). *Portrait of Alexey A. Arakcheyev (1769–1834)*. 1824. Oil. 70 x 62.5 cm. The Military Gallery of the Winter Palace, State Hermitage Museum, St. Petersburg (GE-7813).

IMAGE 245

Konstantin Vladimirovich Chevkin was chief of staff of the Corps of Mining Engineers and a member of the Construction Commission for the St. Petersburg–Moscow Railway. He and Major Whistler had discussions about education systems.



Konstantin Vladimirovich Chevkin. 1857–1861. The State Government in Russia in Portraits from the Ninth through the Twenty-First Century, accessed 4 November 2021, deduhova.ru/statesman/konstantin-vladimirovich-chevkin/

IMAGE 246

Engineer-General Jean-Antoine Maurice Destrem was a transport engineer, poet, and translator of the Russian fabulist Ivan Krylov



Destrem Moritz Ivanovich (Jean-Antoine-Maurice Destrem) (1788-1855). (Napoleon and Revolution, accessed 22 September 2021, <http://impereur.blogspot.com/2017/05/jean-antoine-maurice-destrem-1788-1855.html>)

IMAGE 247

Pavel Petrovich Mel'nikov, transport engineer, head of the Northern Administration of the St. Petersburg–Moscow Railway, became one of Major Whistler's closest Russian friends.



Pavel Petrovich Mel'nikov (Ot konki do trampaia Iz istorii peterburgskogo transporta [From the Horse Car to the Street Car: From the History of Petersburg Transportation])[St. Petersburg: Liki Rossii; Moscow: Dzhuliia, 1994], p. 13)

IMAGE 248

Nikolai Osipovich Kraft, transport engineer, head of the Southern Administration of the St. Petersburg–Moscow Railway



Nikolai Osipovich Kraft (Veviorovskii, LIIZbT 1809–1959, p. 48)

IMAGE 249

Dmitrii Ivanovich Zhuravskii, transport engineer, was in charge, along with Major Whistler, of building the bridge across the Vereb'ia River along the route of the St. Petersburg–Moscow Railway. He presented tickets for the opera to Deborah Whistler.



D.I. Zhuravskii (Veviorovskii, LIIZbT 1809–1959, p. 69)

IMAGE 250

Anton Ivanovich Shtukenberg, transport engineer, was first cousin to A.O. Koritskii, James's private drawing teacher, and a great admirer of Major Whistler.



A.I. Shtukenberg (Neviorovskii, LIIZhT 1809–1959, p. 67)

IMAGE 251

Baron Anton Ivanovich Del'vig, transport engineer, on special assignment to Count P.A. Kleinmikhel', considered Major Whistler "remarkable."



Ilya Repin (1844–1931). *Portrait of Military Engineer A.I. Delvig*. 1882. 108 × 86 cm. State Tret'iakov Gallery, Moscow.

IMAGE 252

Order of St. Anne, 2nd Class, Civil Division, was awarded to Major Whistler in 1847.



Imperial Russian Order of St. Anne, 2nd Class, Civil Division. 1850. 18k gold and enamel; 14kt gold ribbon wire. 4.4 x 4.4 cm. Stamped with 1850 date. Sold at auction by Jackson's International Auctioneers, 19 November 2020.